

Rates

The District's water and wastewater rate structure contains three categories of charges:

Commodity Charge - cost to buy or produce water

Fixed Monthly Base Charge - costs for operations, facilities and capital

Power Surcharge - costs to pump water to the varying elevations in the service area

The commodity charges are based on the actual demands placed on the water and wastewater utility and customers are charged per Hundred Cubic Feet (CCF) of water used.

Since all customers benefit from the pipes, pumps, reservoirs, and future water reliability programs, these infrastructure costs are recovered by the fixed base charges and are based on the size of the water meter servicing a property; the majority of residential customers have 3/4" or 1" meters.

What has SMWD done to reduce costs?



Reduced energy costs by
\$400,000
with solar array



Reduced operational costs by
\$500,000
through operational and
technology efficiencies



Reduced imported water costs by
\$2 Million
by using recycled water

Residential Customers

Commercial Customers

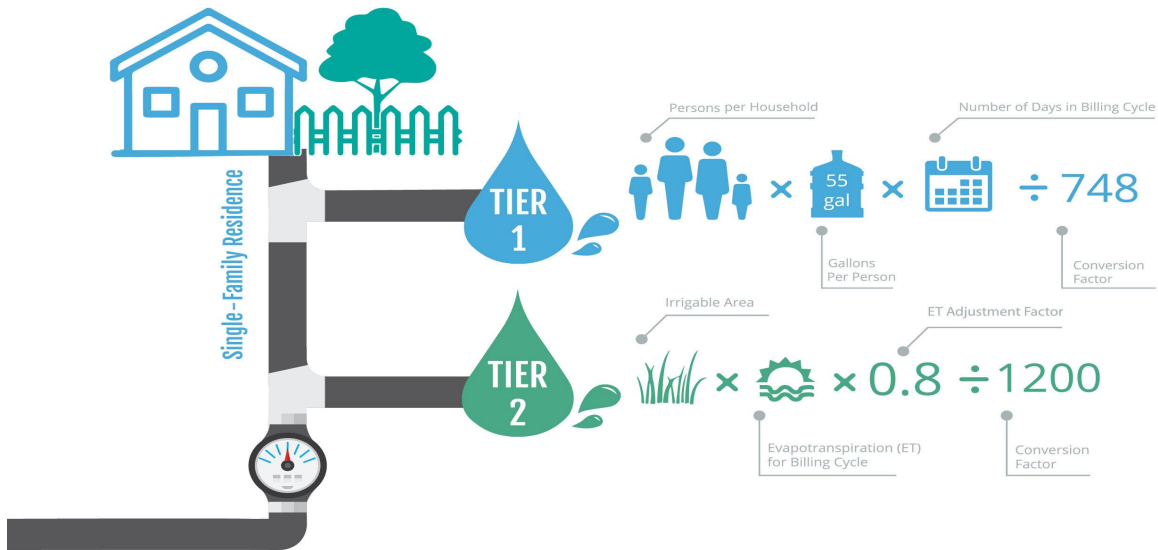
Recycled Water Customer

Residential Customers

SMWD BILL = COMMODITY + FIXED + POWER SURCHARGE

WATER & SEWER

WATER & SEWER



Potable Water Base Charge for all Residential Customers (\$/meter size)

¾" & 1" Residential	\$23.13
1" Commercial	\$30.18
1 ½"	\$47.45
2"	\$68.59

*The majority of residential customers have ¾ inch meters

Potable Water Commodity Rates - Residential Customers (\$/CCF)

Single- and Multi-Family Customers	
Tier 1	\$2.20
Tier 2	\$2.57
Tier 3	\$3.36
Tier 4	\$5.53
Irrigation Customers	
Tier 1	\$2.57
Tier 2	\$3.56
Tier 3	\$5.64

Power Surcharge – Residential Customers (\$/CCF)

Zone 3	\$0.11
Zone 4	\$0.18
Zone 5	\$0.30

Zones are based on elevation

Wastewater - Residential Customers

- Wastewater - Commodity Charge (\$/CCF)
 - \$1.05
 - *single-family maximum of 9 CCF
 - *multi-family maximum of 7 CCF
- Wastewater – Base Charge (\$/meter size)
 - single-family \$29.10
 - multi-family \$25.96

Commercial Customers

Drinking (Potable) Water - Commercial Customers

- Potable Water Commodity Charge (\$/CCF) - Commercial Customer
 - \$2.12

Potable Water Base Charge - Commercial Customers (\$/meter size)

1"	\$30.18
1 ½"	\$47.45
2"	\$68.59
2 ½"	\$93.96
3"	\$125.67
4"	\$189.10
6"	\$364.57
8"	\$575.99

Power Surcharge - Commercial Customers (\$/CCF)

Zone 3	\$0.11
Zone 4	\$0.18
Zone 5	\$0.30

Zones are based on elevation

Wastewater Base Charge (\$/CCF)

Commercial - C1	
C1 2" and smaller	\$27.79
C1 greater than 2"	\$154.98
Commercial - C2	
C2 2" and smaller	\$85.62
C2 greater than 2"	\$156.28
Commercial - C3	
C3 2" and smaller	\$88.15
C3 greater than 2"	\$158.81
Commercial - C4	
C4 2" and smaller	\$92.07
C4 greater than 2"	\$162.73
Commercial - CR	
CR 2" and smaller	\$27.77
CR greater than 2"	\$27.77

Wastewater Volumetric Rates (\$/CCF)

COM - C1	\$0.88
COM - C2	\$1.05
COM - C3	\$1.47
COM - C4	\$2.34
COM - CR	\$0.82

Private Fire Base Charge (\$/meter size)

1"	\$27.52
1 ½"	\$42.19

2"	\$60.14
2 ½"	\$81.69
3"	\$108.62
4"	\$162.48
6"	\$311.49
8"	\$491.03
10"	\$730.72

Recycled Water Customers

Recycled Water - Base Charge (\$/meter size)

¾" & 1" Residential	\$23.13
1" Commercial	\$30.18
1 ½"	\$47.45
2"	\$68.59
2 ½"	\$93.96
3"	\$125.67
4"	\$189.10
6"	\$364.57
8"	\$575.99

Recycled Water Commodity Rate (\$/CCF)

Tier 1	\$2.21
Tier 2	\$2.62
Tier 3	\$4.90

Power Surcharge - Recycled Water Customers (\$/CCF)

Zone C	\$0.24
Zone D	\$0.42

Zone E

\$0.53

Zones are based on elevation

Rate Calculator



[Click here](#) to calculate your rate.

Variance Forms

- Single Family Residential Water Budget Variance Form
 - [Digital form](#)
 - [Paper form](#)
- [Irrigation Meter Area Change Request Form](#)

Resources

2020 Draft Cost Of Service and Rates Study

- [2020 Draft SMWD Cost of Service and Rate Study.](#)
- [Prop 218 Notice](#)

Previous Rate Study Reports

- [2015 Districts Complete Rate Analysis \(PDF\)](#)

Contact Us

Live Chat

Start [Live Chat](#)

Business Hours

Monday - Friday

8 a.m. - 5 p.m.

Closed Holidays

Physical Address

26111 Antonio Parkway

Rancho Santa Margarita, CA 92688

Phone: (949) 459-6400

Emergency: (949) 361-6294

Subscribe to SMWD's OnTap Newsletter