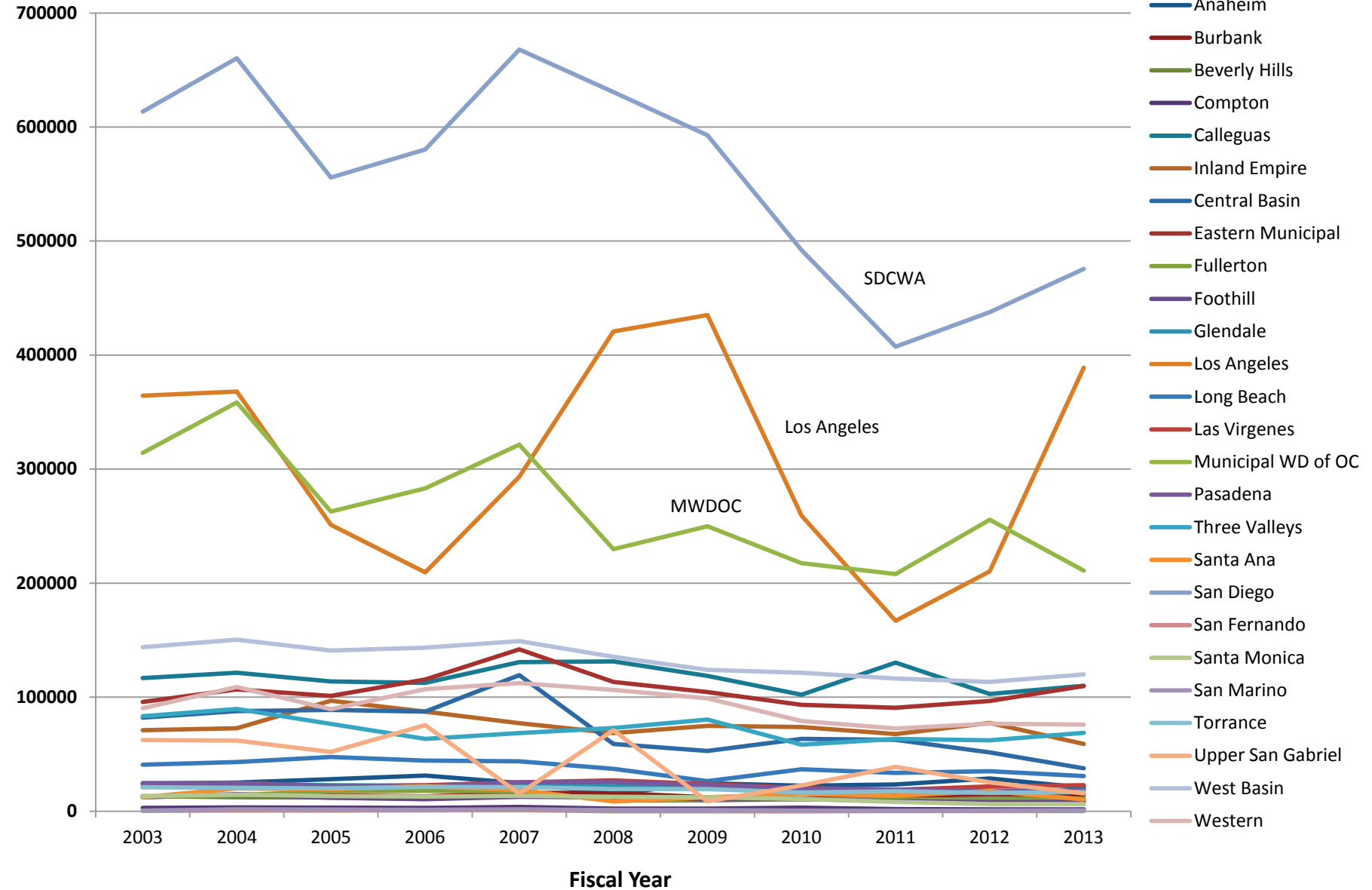


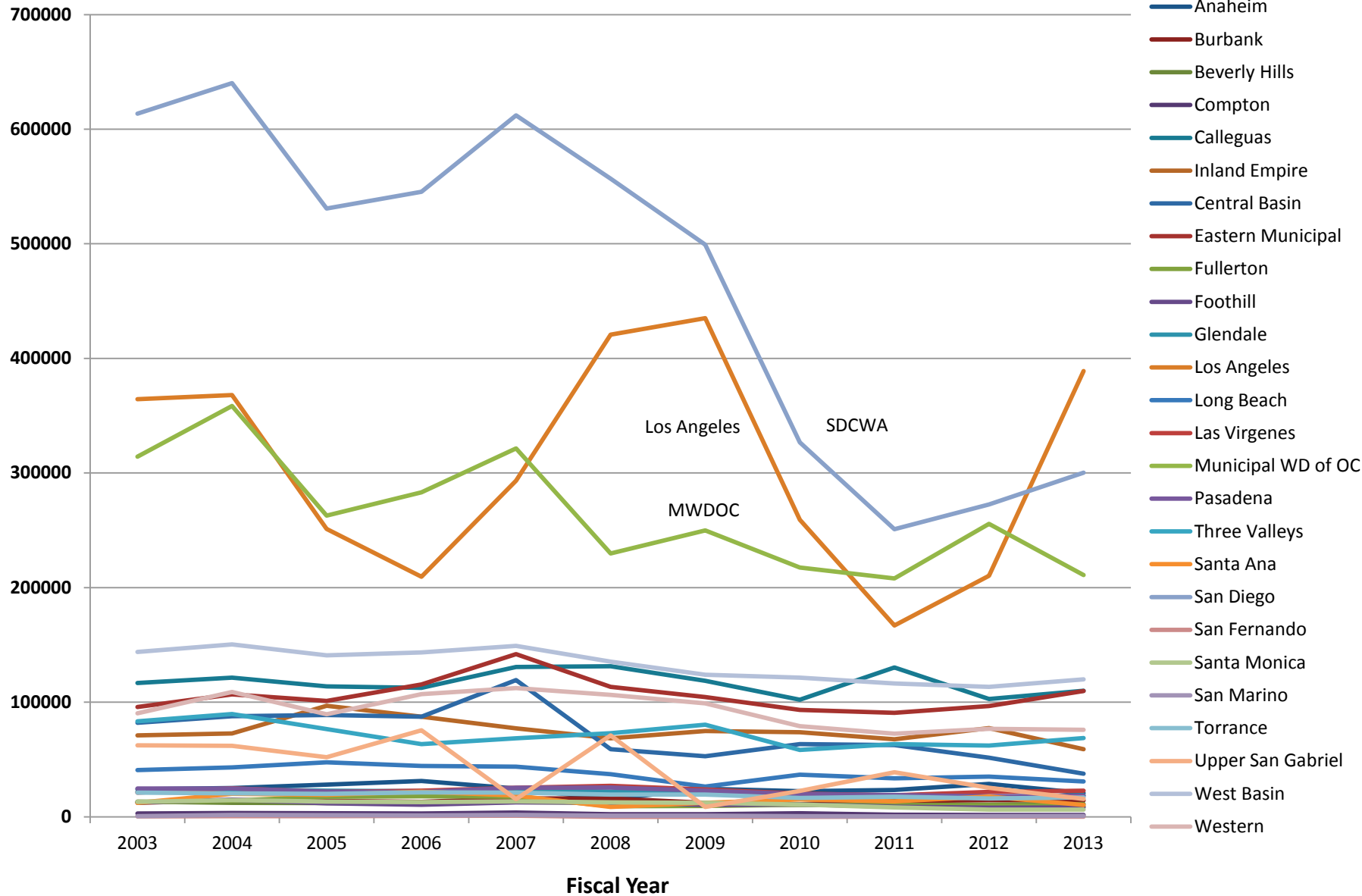
# MWD FY As Billed Sales – With Exchange

Acre Feet



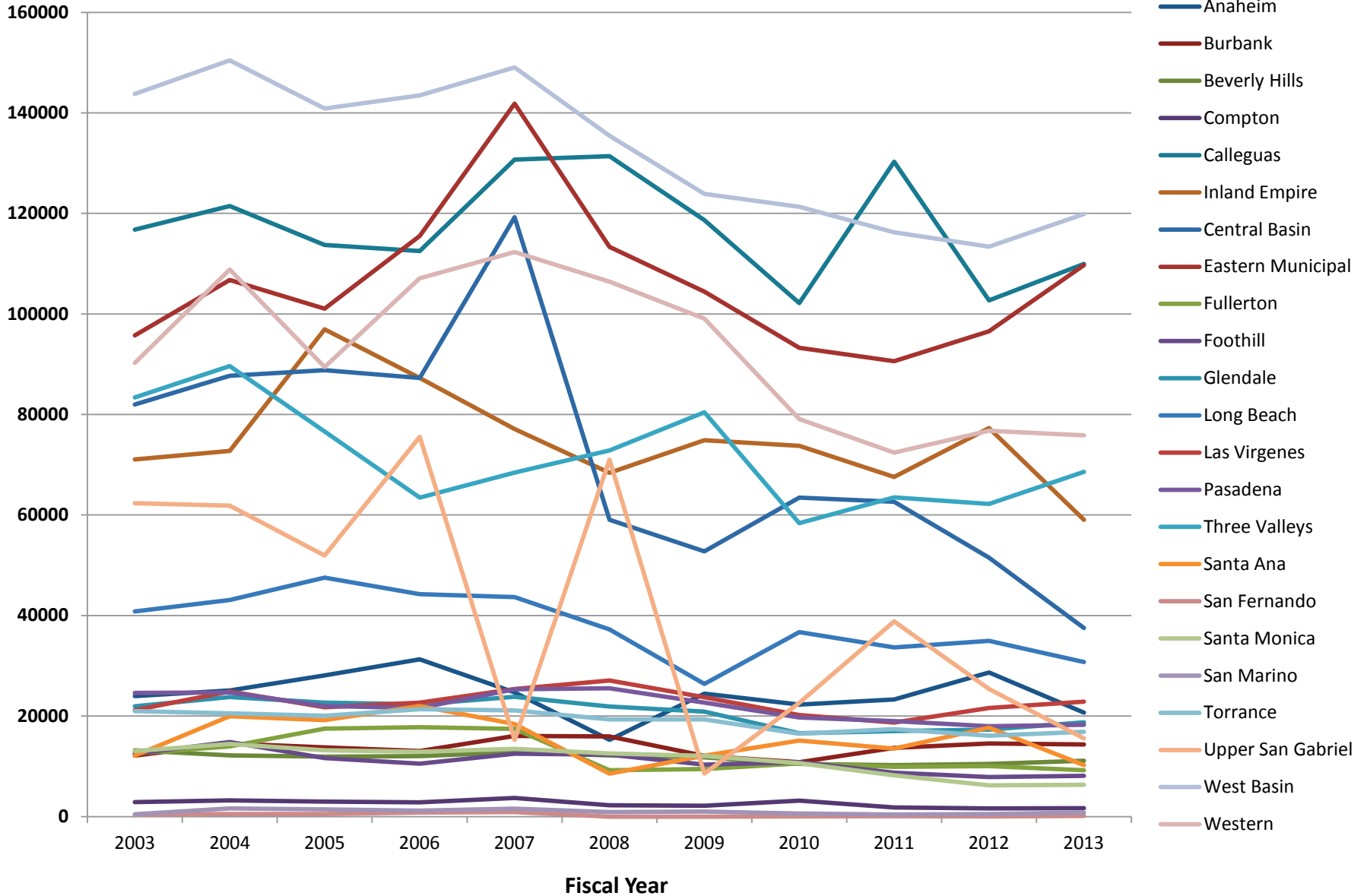
# MWD FY As Billed Sales – Without Exchange

Acre Feet



# MWD FY As Billed Sales – With or Without Exchange Minus SDCWA, LADWP, MWDOC

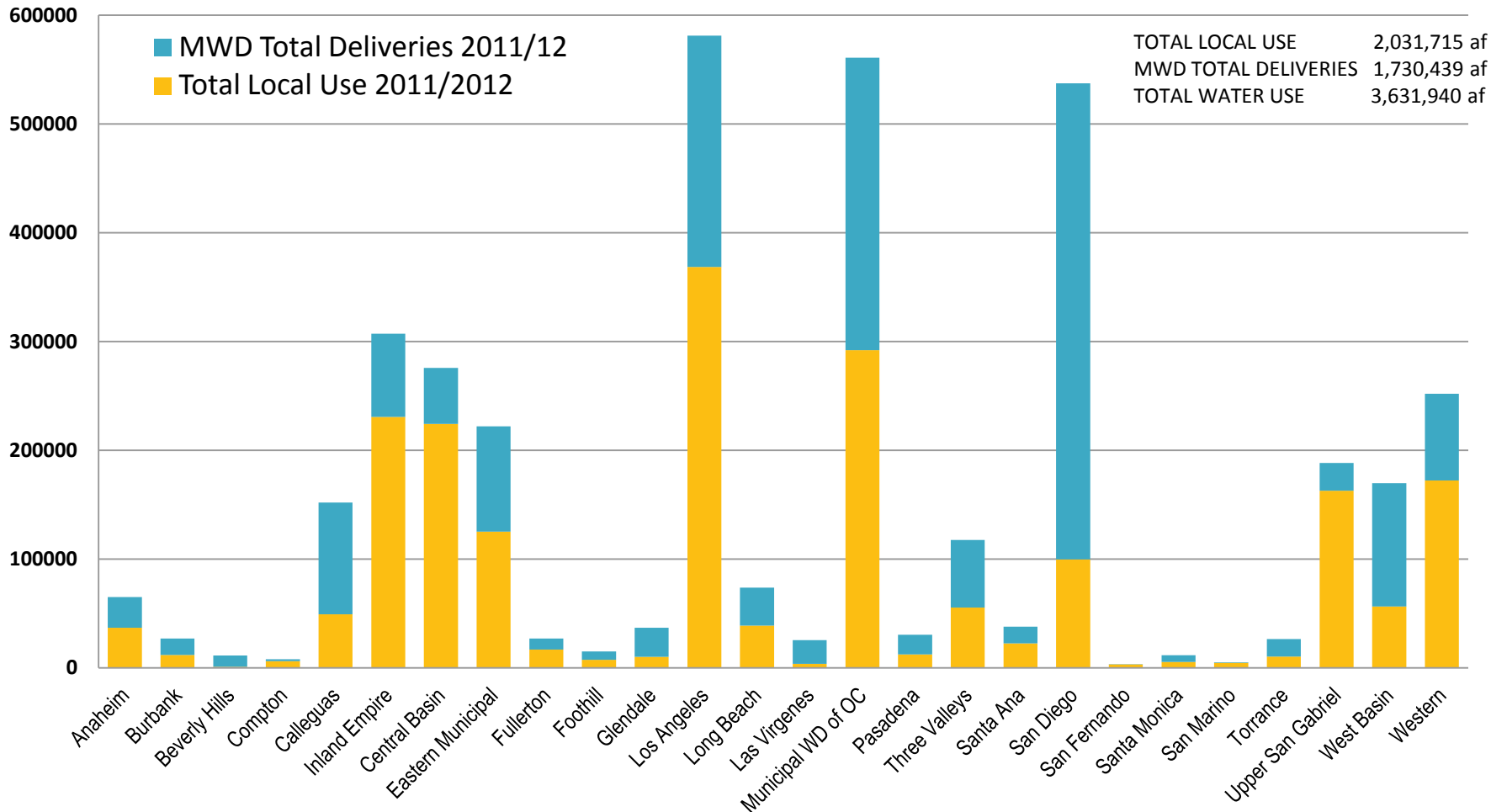
Acre Feet



# Volume Water Use By MWD's Member Agencies

## Local Production plus MWD Deliveries

Acre Feet



Local Production = groundwater, surface water, recycled wastewater, LA Aqueduct supplies and any use of MWD's replenishment deliveries

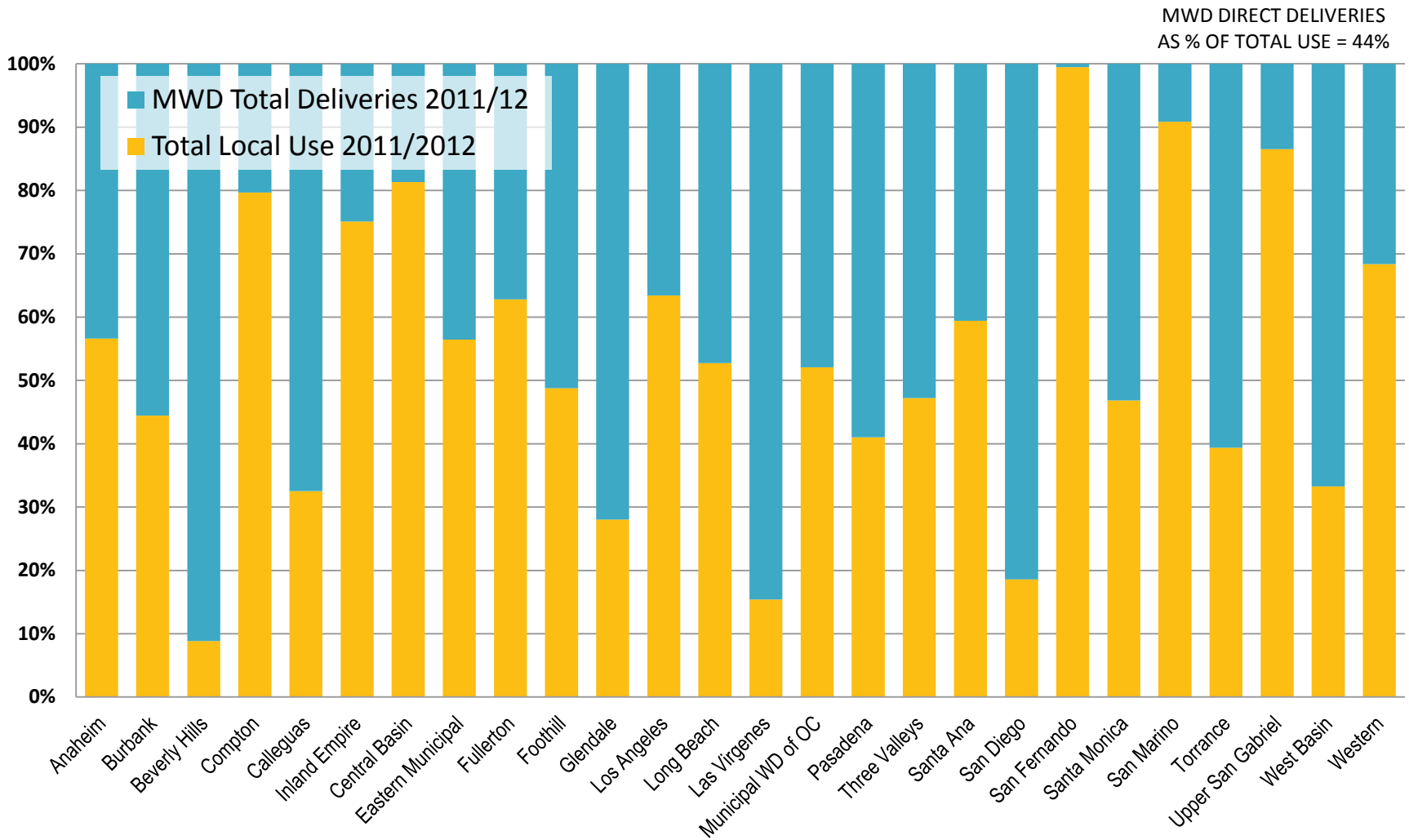
Total Local Use includes net imports from other member or non-MWD agencies, not including water used for environmental purposes

MWD Total Deliveries include MWD Indirect Deliveries and SDCWA/MWD Exchange

Source: MWD 2012 Annual Report p.13, 14 Table 1-4

# Percent Water Use By MWD's Member Agencies

## Local Production plus MWD Deliveries



Local Production = groundwater, surface water, recycled wastewater, LA Aqueduct supplies and any use of MWD's replenishment deliveries

Total Local Use includes net imports from other member or non-MWD agencies, not including water used for environmental purposes

MWD Total Deliveries include MWD Indirect Deliveries and SDCWA/MWD Exchange

Source: MWD 2012 Annual Report p.13, 14 Table 1-4