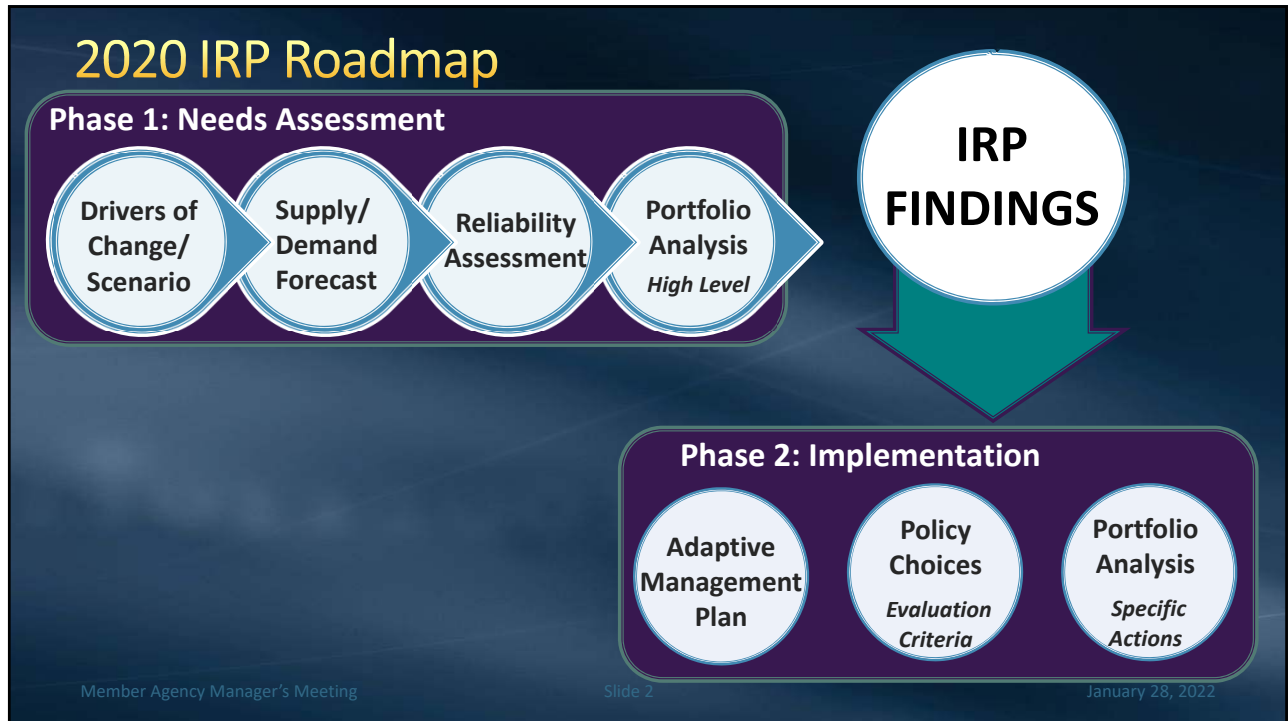




Update on Draft IRP Findings

Member Agency Managers Meeting
January 28, 2022

1



2

Findings Fall Within Five Focused Areas



Insights gathered through collaboration with the member agencies, other stakeholders, expert consultants, and modeling analysis performed over the last two years

Member Agency Manager's Meeting

Slide 3

January 28, 2022

3

Focus Area – “SWP Dependent Areas”

- Vulnerabilities in the SWP Dependent areas are more severe given reduced reliability of SWP supplies.
 - **Actions identified in the implementation phase must prioritize addressing the SWP Dependent area's reliability challenges.**
- New core supplies and new/or existing storage must first address and reach SWP Dependent Areas.
- System flexibility and distribution system investments can increase SWP Dependent Areas' access to existing core supplies and storage.
- Shortages on the Colorado River Aqueduct limit the effectiveness of system distribution improvements

Member Agency Manager's Meeting

Slide 4

January 28, 2022

4

Focus Area – Storage

- Storage is a vital component in maintaining reliability under current and future conditions
- Expanding existing or developing new storage programs may be needed to help balance new core supply development in order to meet potential future shortages
- Storage programs with even modest put/take capacities can help reduce the need for flexible supply.

Member Agency Manager's Meeting

Slide 5

January 28, 2022

5

Focus Area – Demand Management

- Metropolitan's future reliability is susceptible to increases and decreases in demands
- It is important to pay attention to demand rebound, demand growth, and demand reductions and intervene as necessary
- Managing demands through the efficient use of water reduces dependency on supplies, helps preserve storage and helps avoid the need for extraordinary conservation measures

Member Agency Manager's Meeting

Slide 6

January 28, 2022

6

Focus Area – Imported Supply

- Existing imported supplies are at risk from various drivers of uncertainty
- Maintaining existing imported supply reliability reduces the need for new core supply development and leverages years of investments
- SWP supplies, which are highly susceptible to varying hydrologic conditions, provide water for storage in normal and wet years for use in dry years.

Member Agency Manager's Meeting

Slide 7

January 28, 2022

7

Focus Area – Local Supply

- Maintaining existing and developing new local supplies is critical in helping manage demands on Metropolitan, which increases sustainability and reduces the dependency on imported supplies.
- Impacts to reliability occur if local supply assumptions are not achieved; therefore, it is important to track progress of local supply development as one of the signposts in the Adaptive Management Plan.
- Additional actions may be needed should existing and future local supply levels deviate from IRP assumptions.

Member Agency Manager's Meeting

Slide 8

January 28, 2022

8

Next Steps

- Obtain Member Agency feedback on draft report
 - **Comments due February 8th**
- February 22nd – Request approval of Phase 1 Findings at IRP Special Committee
- March 8th – Board action to adopt the IRP Phase 1: Needs Assessment report and findings

Member Agency Manager's Meeting

Slide 9

January 28, 2022

9



10